

INDOFINE CHEMICAL COMPANY, INC.  
121 Stryker Lane, Bldg. 30  
Hillsborough, NJ 08844  
chemical@indofinechemical.com

Phone: (908) 359-6778

Fax: (908) 359-1179

## CERTIFICATE OF ANALYSIS

**Cat No.: 021010**

Product: **5,7-DIMETHOXYFLAVONE**  
(Methylated Chrysin; Chrysin dimethyl ether)

CAS No.: [21392-57-4]

Lot Number: 1209243

Molecular Formula: C<sub>17</sub>H<sub>14</sub>O<sub>4</sub>

Molecular Weight: 282.3

Melting Point: 153-155°C

Appearance: Off white powder

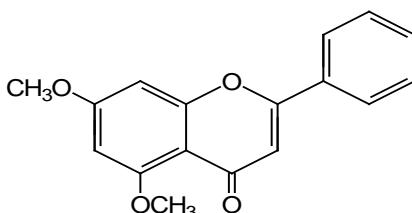
TLC: Chloroform : Methanol (9.5:0.5)

Solubility: Soluble in Chloroform

Storage: Cool, dry place

Moisture(KF): 0.38%

Purity (HPLC): 99.4%



Expiration Date: July 2017